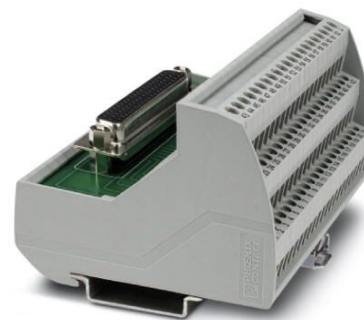


# DNA-STP-62-DR

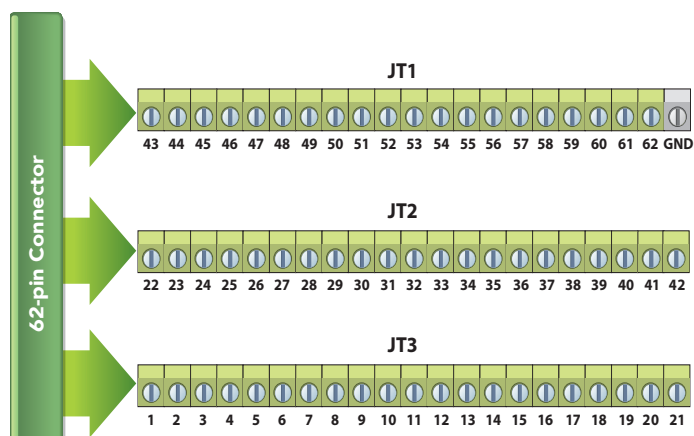
## 62-pos Terminal Panel for PowerDNA Layers

- 62-pin D-Sub female connector
- Three 21-position terminal blocks (JT1, JT2, JT3)
- Use DNA-CBL-62 when connecting to PowerDNA layers
- For mounting on 35 x 7.5 mm DIN rail



The DNA-STP-62-DR provides easy screw terminal connections for all DNA and DNR series I/O boards which utilize the 62-pin connector scheme. The DNA-STP-62-DR is connected to the I/O board via DNA-CBL-62 series cables.

### Block Diagram:



### Technical Specifications:

Connectors	DB-62 - 62-pin female D-Sub; 3 x 21-position terminal blocks;
Screw Terminal Wire Sizes	12 - 24 AWG
Inter-terminal isolation	>350 Vrms
Operating Temp	- 20°C to 50°C
Dimensions	113.5w x 62d x 69h mm