

PCI/ISA HARDWARE

PowerDAQ MF Accessories - Cables & Connectors

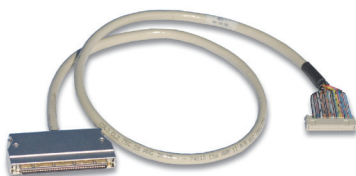


PD-CBL-96

PD-CBL-96 Cable

96-way pinless, round shielded cable with metal cover plates. Use this cable to connect a PD2-MF(S) series board to any accessories with 96-way connector. It includes two Fujitsu FCN-247J096-G/E connectors.

PD-CBL-96	1m
PD-CBL-96-6FT	6 ft
PD-CBL-96-9FT	9 ft



PD-CBL-9626

PD-CBL-9626 Cable

Shielded 96/26-way cable for connecting any PowerDAQ MF(S) board to a 5B-rack. It includes 96-pin Fujitsu FCN-247J096-G/E and 26-pin Adam Tech FCS-26-SG connectors.

PD-CBL-9626	18"
-------------------	-----

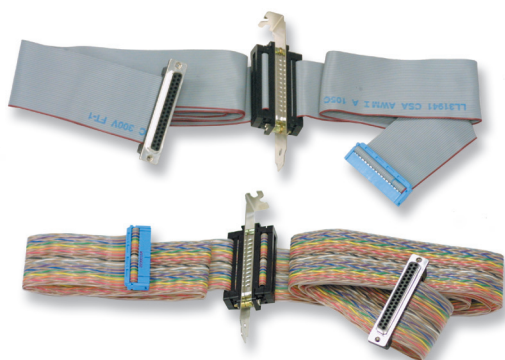


PD-CBL-9637

PD-CBL-9637 Cable

Shielded 96/37-way cable for connecting any PowerDAQ MF(S) board to PD-STP-3716 screw-terminal panel. It includes Fujitsu FCN-247J096-G/E and Adam Tech DC-37-SF-M2 connectors.

PD-CBL-9637	1m
-------------------	----



PD-CBL-37 & PD-CBL-37TP

PD-CBL-37 DIO Cable Set

The PD-CBL-37 digital I/O cable set includes a 37-way internal ribbon cable with mounting bracket and a 37-way external ribbon cable. Use this set to connect from 36-pin digital connector on any PowerDAQ MF(S) board to any accessory with 36-pin digital connector.

The PD-CBL-37TP is twisted-pair version of the digital I/O cable set.

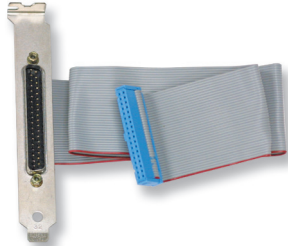
PD-CBL-37	1m
PD-CBL-37-6FT	6 ft
PD-CBL-37TP	1m twisted-pair

Ordering Information:

Part Number	Description
PD-CBL-96	96-way pinless, 1m round shielded cable with metal cover plates
PD-CBL-96-6FT	96-way pinless, 6 ft round shielded cable with metal cover plates
PD-CBL-96-9FT	96-way pinless, 9 ft round shielded cable with metal cover plates
PD-CBL-9626	18" round shielded cable that connects from PD-5BCONN to PD-STP-16 or PD-BNC-16
PD-CBL-9637	18" round shielded cable that connects from PowerDAQ II MF(S) board to PD-STP-3716
PD-CBL-37	DIO cable set: 37-way, 1m D-sub cable, internal cable with mounting bracket
PD-CBL-37-6FT	DIO cable set: 37-way, 6 ft D-sub cable, internal cable with mounting bracket
PD-CBL-37TP	DIO twisted-pair cable set: 37-way, 1m D-sub cable, internal cable with mounting bracket

PCI/ISA HARDWARE

PowerDAQ MF Accessories - Cables & Connectors

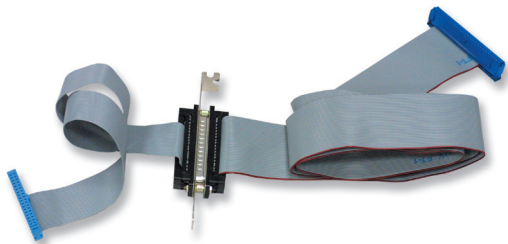


PD-CBL-37BRKT

PD-CBL-37BRKT Internal DIO Cable

37-way internal ribbon cable with mounting bracket. The cable is included as part of PD-CBL-37 digital I/O cable set.

PD-CBL-37BRKT..... 18"

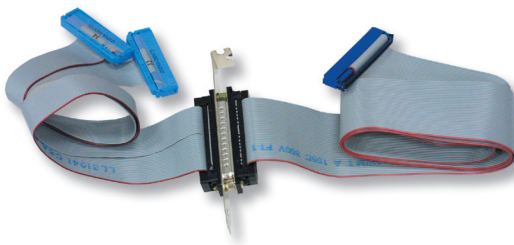


PD-CBL-3650-8/8

PD-CBL-3650-8/8 Digital I/O Cable Set

The PD-CBL-3650-8/8 is a digital I/O cable set. It includes a 24-way internal ribbon cable with mounting bracket that connects to the 36-pin digital connector on any PowerDAQ MF(S) board and a 36-way external ribbon cable that connects to any 8-channel SSR backplane (50-pin connector).

PD-CBL-3650-8/8 1m

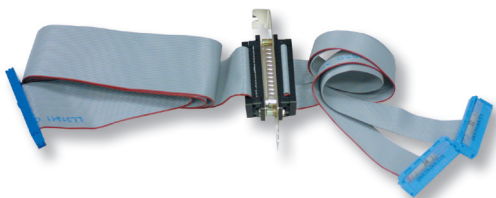


PD-CBL-3650-16I

PD-CBL-3650-16I Digital Input Cable Set

The PD-CBL-3650-16I is a digital input cable set. It includes a 36-way internal ribbon cable with mounting bracket that connects to two (J2 and J4) 36-pin digital connectors on any PowerDAQ MF(S) boards and a 36-way external ribbon cable that connects to any 8- or 16-channel SSR backplane (50-pin connector).

PD-CBL-3650-16I 1m



PD-CBL-3650-16O

PD-CBL-3650-16I Digital Output Cable Set

The PD-CBL-3650-16I is a digital output cable set. It includes a 36-way internal ribbon cable with mounting bracket that connects to two (J2 and J4) 36-pin digital connectors on any PowerDAQ MF(S) boards and a 36-way external ribbon cable that connects to any 8- or 16-channel SSR backplane (50-pin connector).

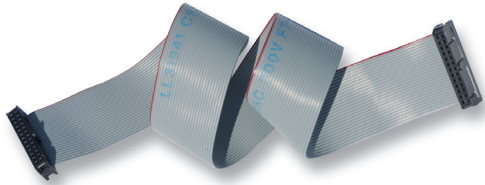
PD-CBL-3650-16O 1m

Ordering Information:

Part Number	Description
PD-CBL-37BRKT	DIO cable: 37-way, 18' internal cable with mounting bracket
PD-CBL-3650-8/8	DIO cable set: 36/50-way, 1m ribbon cable, internal cable with mounting bracket (8 DI and 8 DO)
PD-CBL-3650-16I	DIO cable set: 36/50-way, 1m ribbon cable, internal cable with mounting bracket (16 DI)
PD-CBL-3650-16O	DIO cable set: 36/50-way, 1m ribbon cable, internal cable with mounting bracket (16 DO)

PCI/ISA HARDWARE

PowerDAQ MF Accessories - Cables & Connectors

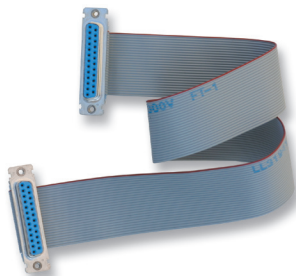


PD-CBL-5B

PD-CBL-5B Ribbon Cable

26-conductor ribbon cable that connects from a 5B backplane (26-pin connector) to PD-5BCONN (26-pin male connector).

PD-CBL-5B..... 18"



PD-CBL-7B

PD-CBL-7B Ribbon Cable

25-conductor ribbon cable that connects from a 7B backplane (25-pin connector) to PD-7BCONN (25-pin female connector).

PD-CBL-7B..... 18"



PD-CBL-SYNC-4

PD-CBL-SYNC Synchronization Cable

Use PD-CBL-SYNC cables to interconnect from 4 to 10 PowerDAQ MF(S) boards.

PD-CBL-SYNC4 4 boards

PD-CBL-SYNC5 5 boards

PD-CBL-SYNC10 10 boards



PD-CONN-CBL

PD-CONN-CBL Shielded Cable

A 96-way pinless cable with metal cover plate and bare wires at one end. It includes Fujitsu FCN-247J096-G/E connector.

PD-CONN-CBL..... 0.5m

Ordering Information:

Part Number	Description
PD-CBL-5B	18" ribbon cable that connects from PD-5BCONN to 5B-xx racks
PD-CBL-7B	18" ribbon cable that connects from PD-7BCONN to 7B-xx racks
PD-CBL-SYNC4	Internal cable to synchronize up to 4 PowerDAQ II multifunction boards
PD-CBL-SYNC5	Internal cable to synchronize up to 5 PowerDAQ II multifunction boards
PD-CBL-SYNC10	Internal cable to synchronize up to 10 PowerDAQ II multifunction boards
PD-CONN-CBL	96-way pinless, 0.5m round shielded cable with metal cover plate (bare wires at one end)