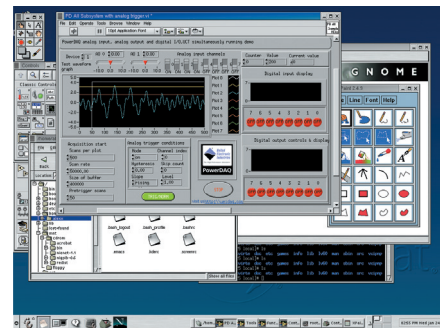
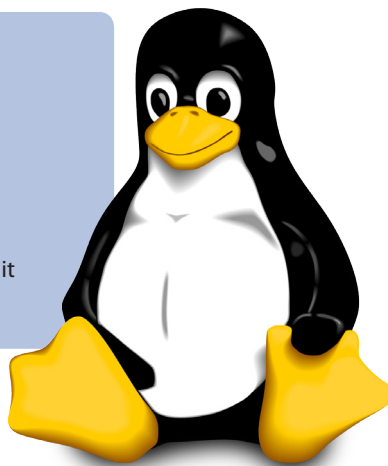


## PowerDAQ for Linux BNC & Distribution Panel

- Linux driver supplied as C source code
- Includes PowerDAQ interface kernel library
- Supports as many as four PowerDAQ boards running simultaneously, extends to 32 boards
- API is virtually identical to the Windows driver, making it simple to port applications with minimal effort



## General Description

It's the hottest operating system in years: Linux. Scientists and engineers are anxious to try out this open-source environment for their acquisition and analysis tasks. Until recently, though, their options have been limited. Although several firms have announced Linux drivers for their data-acquisition hardware, few are actually delivering.

However, UEI's PowerDAQ for Linux drivers are shipping today at no charge; they come as part of the PowerDAQ Software Suite CD-ROM, and you can also download the drivers from our web site. These drivers are designed to work with Ver 2.4.x releases of the Linux kernel such as Debian Gnu/Linux 2.4, RedHat Linux 7.x and SUSE 7.x. When running under Linux, our cards achieve the same extremely high level of performance that you've come to expect from the Windows versions. Users who wish to run this driver under Linux kernel versions other than 2.4.X can recompile it because we give you the driver's C source code. Of course, as newer kernel versions appear on the market, UEI will test its Linux drivers, supply any modifications that might be necessary, and update its web offerings immediately.

The PowerDAQ for Linux driver consists of three parts:

- A user-level library, supplied in C source code, whose API is almost identical to the API used in the PowerDAQ for Windows driver. Thus you can port Windows applications to Linux with minimal effort. Further, the sequence of calls in Linux is the same as under Windows.
- The Linux driver itself, again supplied as C source code. This module provides the interface between the user library and PowerDAQ interface kernel library.
- The PowerDAQ interface kernel library. This module consists of a precompiled object file that contains entry points to all functions on the PowerDAQ-resident firmware.

This release supports as many as 32 PowerDAQ cards in one backplane. Requirements include a system with a 100-MHz Pentium or better, 64M bytes of system memory, the Gnu C (gcc) compiler Ver 2.95.x or later. The Linux kernel source code must also be installed on the system.

## Ordering Information:

Part Number	Description
PD-LINUX	PowerDAQ 32-bit Linux support