

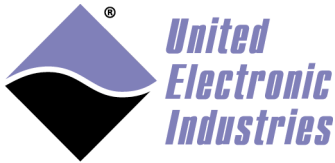
The High-Performance Alternative

# **UEI Serial Server User Manual 1.0**

December 2010 Edition

© Copyright 2010 United Electronic Industries, Inc. All rights reserved

No part of this publication may be reproduced, stored in a retrieval system, or transmitted, in any form by any means, electronic, mechanical, by photocopying, recording, or otherwise without prior written permission.



The High-Performance Alternative

Table of contents

**1. Introduction.....3**

**2. Installation.....3**

    2.1. Windows XP, Windows Vista, Windows 7 32 bits.....3

    2.2. Windows Vista, Windows 7 64 bits.....5

**3. Configuration .....5**

    3.1. Configure.....5

        3.1.1. Adding a port.....6

        3.1.2. Removing a port.....10

        3.1.3. Importing configuration.....10

        3.1.4. Exporting configuration.....10

        3.1.5. Automatically start configured ports.....10

    3.2. Status.....10

    3.3. Start.....12

    3.4. Stop.....12

    3.5. Exit.....12

**4. Test.....12**

# 1. Introduction

UEI Serial Server makes PowerDNx serial devices accessible as standard windows serial ports (COM ports).

## 2. Installation

### 2.1. *Windows XP, Windows Vista, Windows 7 32 bits*

Before installing the UEI Serial Server ports the User Account Control (UAC) should be turned off (require reboot).

Turning off UAC or enabling test signing will impair computer security.

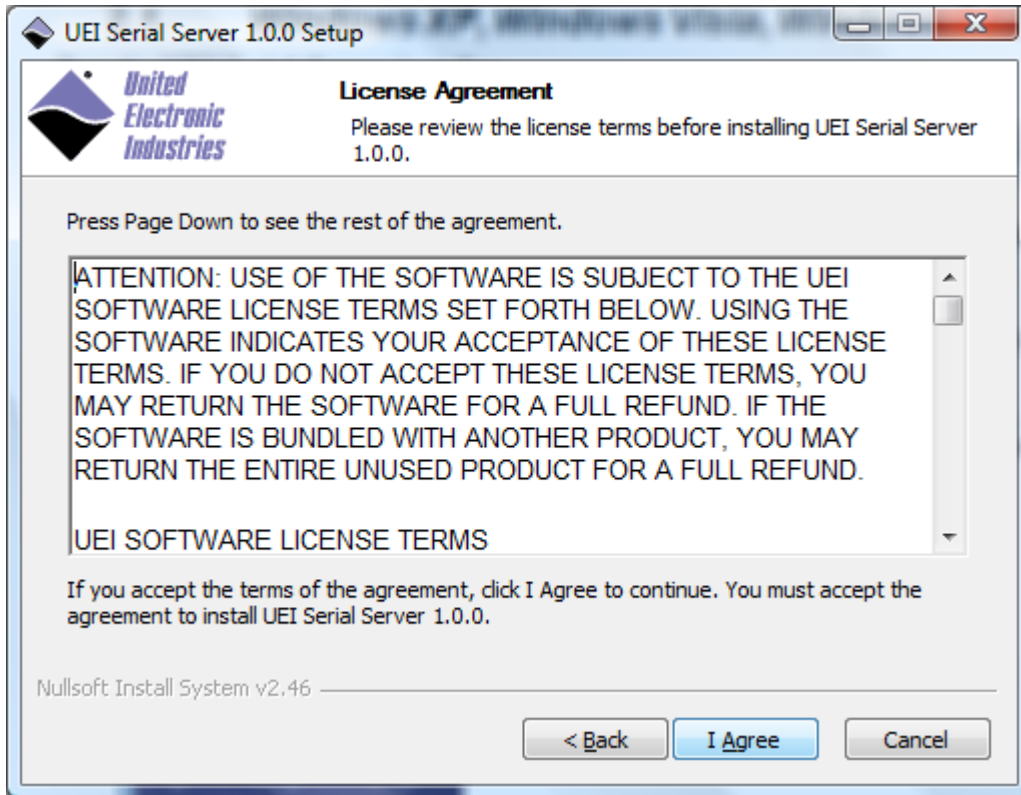
If the Found New Hardware Wizard will pop up then

- select "No, not this time" and click Next;
- select "Install the software automatically (Recommended)" and click Next.

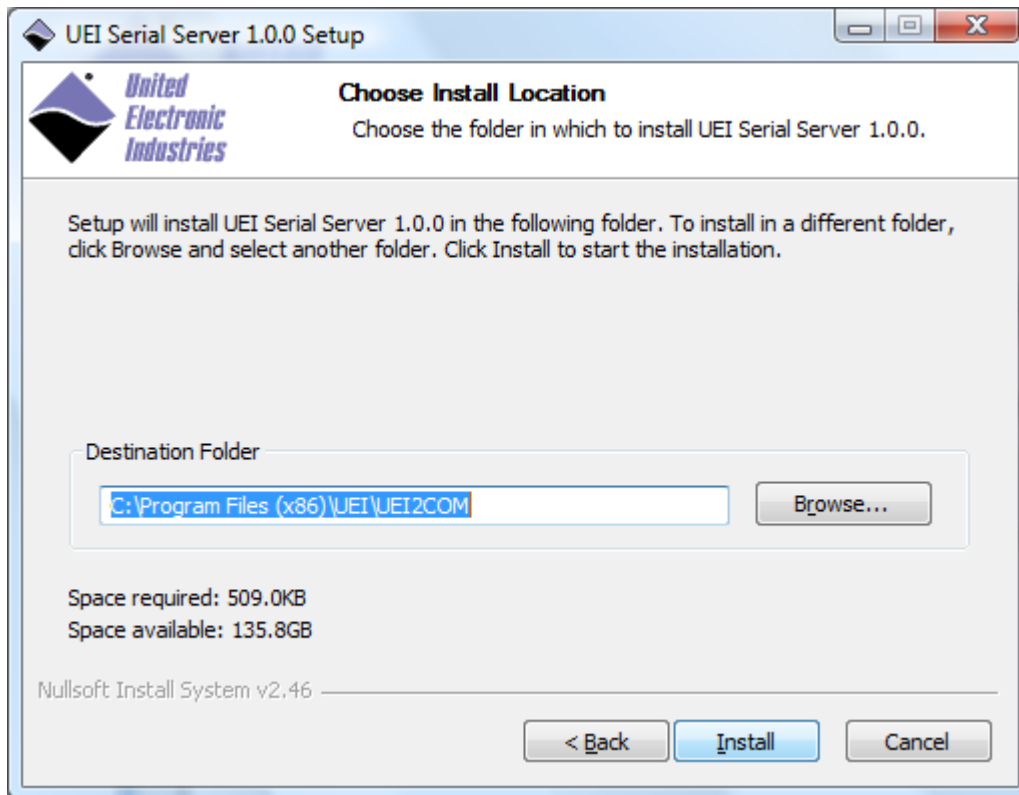
Run the UEI Serial Server installer.



Click on **Next**



Review the license agreement then click on **I Agree**



Check the Destination Folder and click on **Install** to begin installing the new files on your system.

If the **Found New Hardware Wizard** pops up:

- Select **No, not this time** and click Next;
- Select **Install the software automatically (Recommended)** and click Next.

Click on **Finish** to conclude the installation.

## **2.2. Windows Vista, Windows 7 64 bits**

The UEI Serial Server uses a test-signed kernel-mode driver that will not load by default on 64 bits version of Windows.

To enable test signing, open a command prompt and enter the following command:

```
bcdedit.exe -set TESTSIGNING ON
```

Reboot your computer and follow the steps for 32bits version of Windows above.

## **3. Configuration**

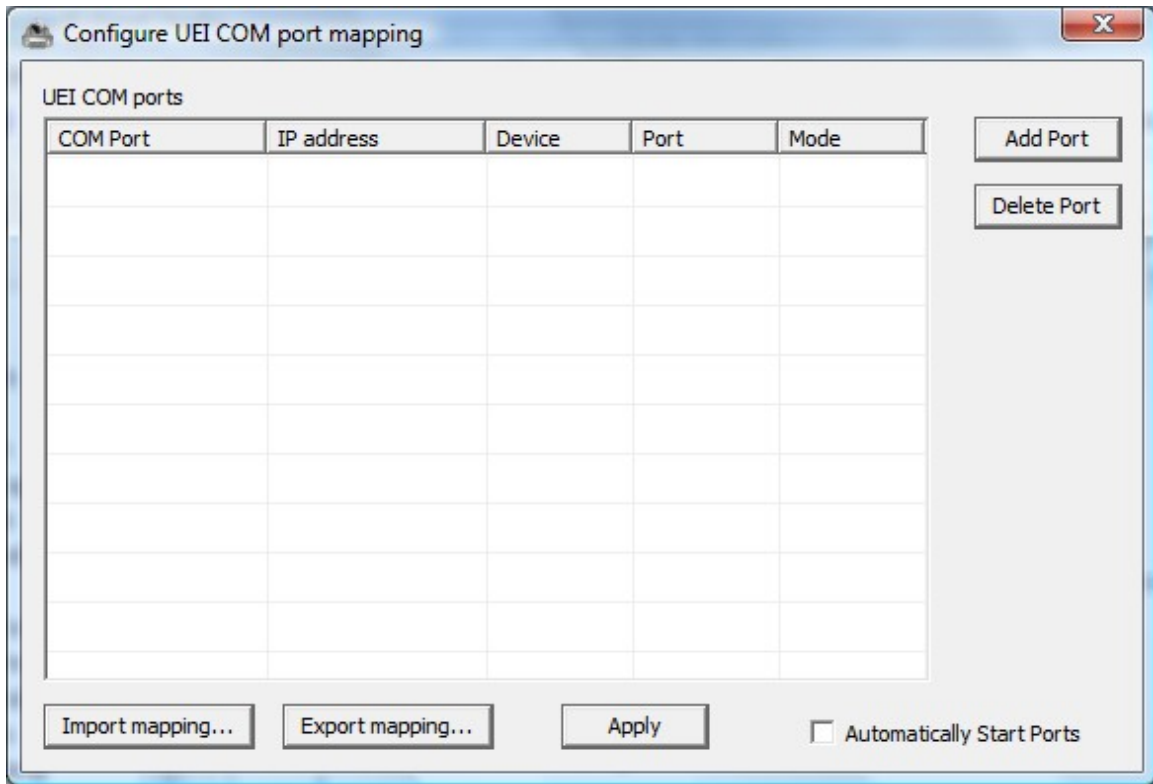
Select the shortcut **Programs/UEI/Serial Server/UEI Serial Server** to run the UEI Serial Server.

You can control the UEI serial server using its icon in the notification area (system tray).

Right-click on the system tray icon and a menu will appear.

### **3.1. Configure...**

Open configuration window to configure mapping of Windows serial port with PowerDNx serial ports.

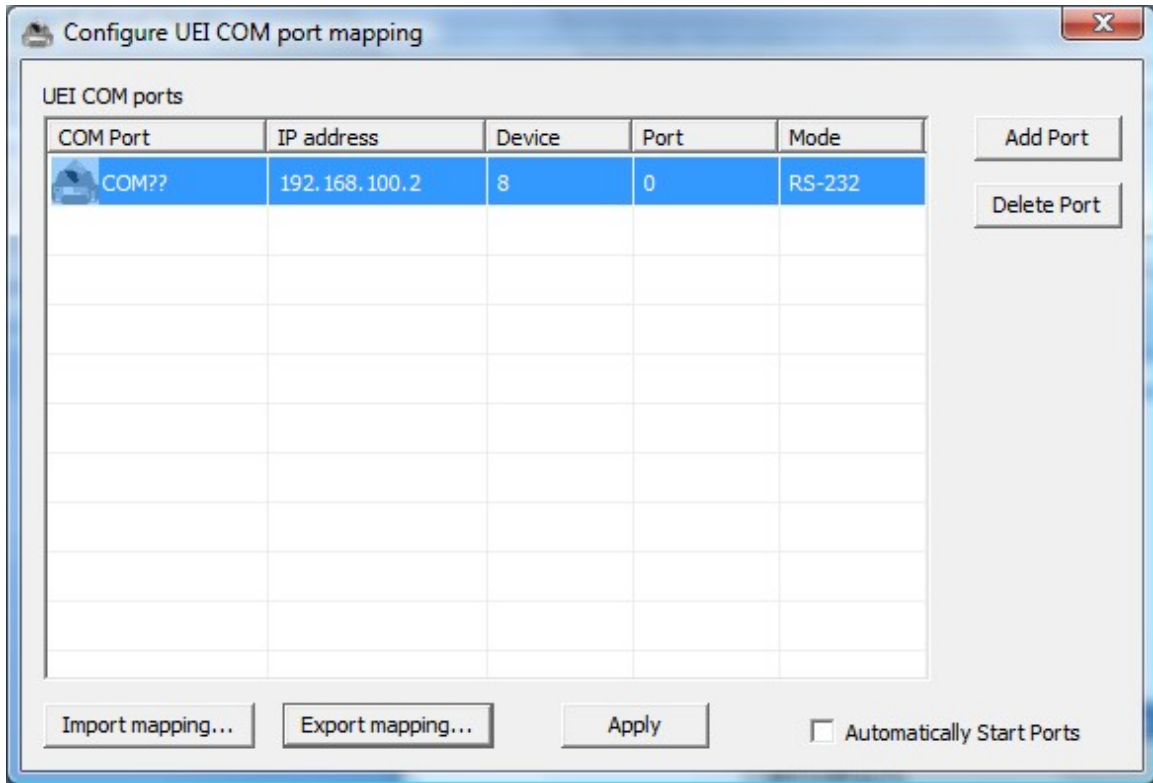


### 3.1.1. Adding a port

Click on **Add** to add a new serial port



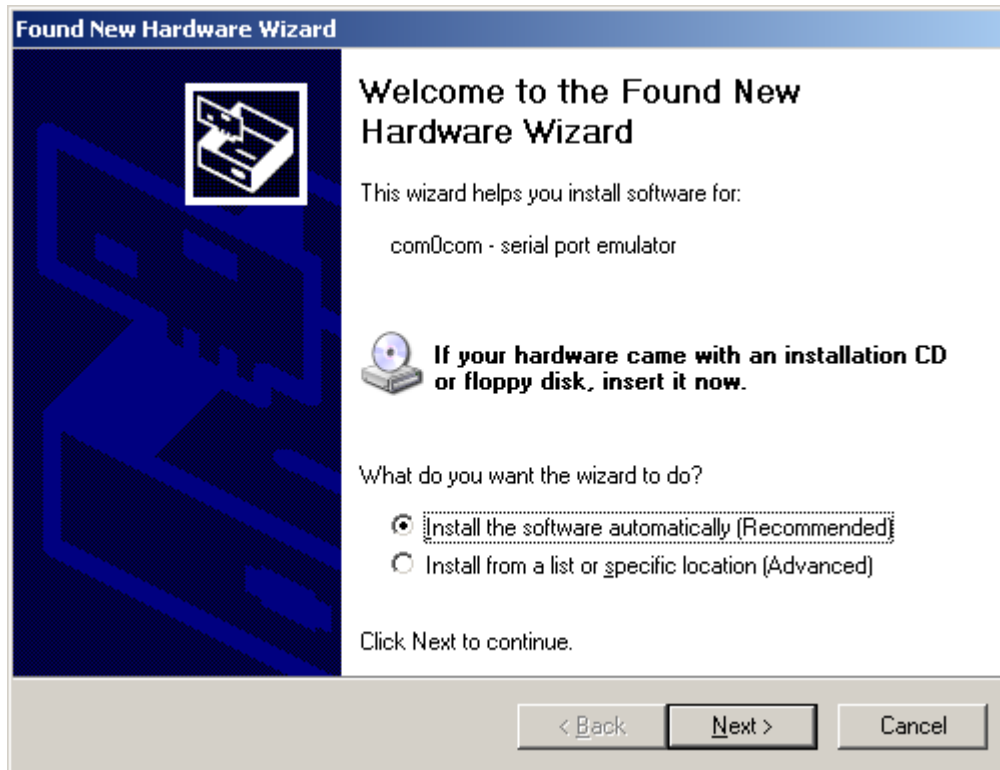
Edit the IP address, Device and Port values using the same method.



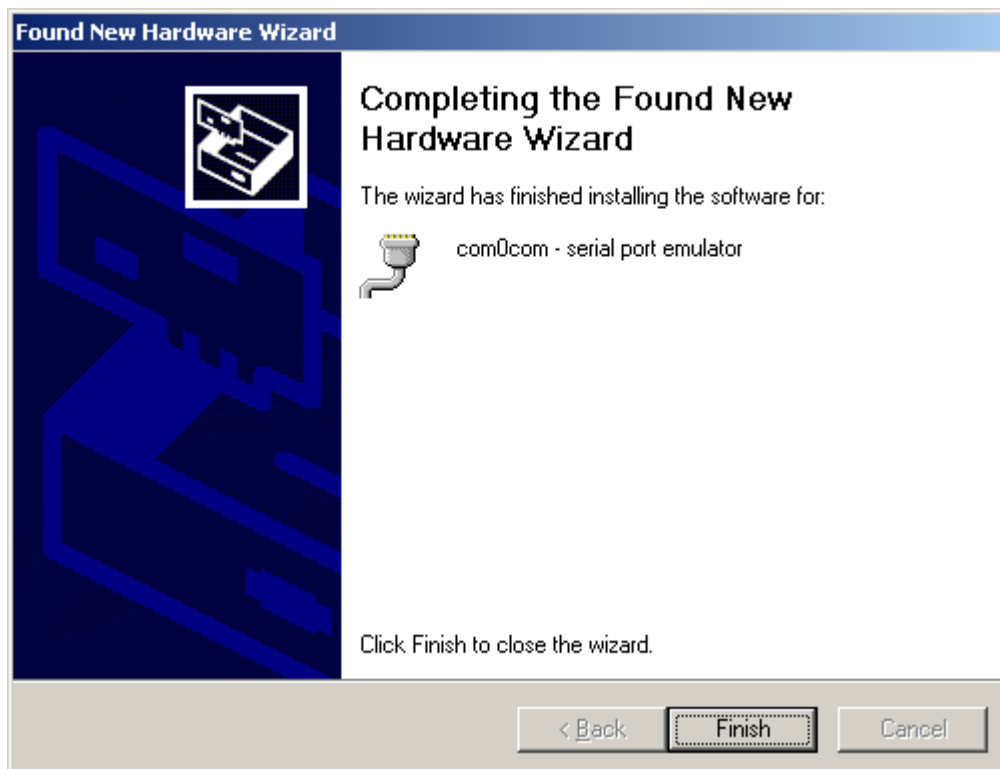
Click on **Apply** to save configuration.

Windows will open the “Found New Hardware Wizard” twice.





Select **Install the software automatically (Recommended)** and click **Next**



Click on **Finish** and do the same steps the second time.

### **3.1.2. Removing a port**

Select the port you wish to remove and click on **Delete**

Click on **Apply** to save configuration.

### **3.1.3. Importing configuration**

Click on **Export mapping...**, to export the current mapping configuration to a file. This is useful to move an existing configuration to a different computer.

The mapping configuration file is an INI file with a [COM??] section for each mapped serial port.

### **3.1.4. Exporting configuration**

Click on **Import mapping...**, to import an existing mapping configuration file. This is useful if you need to configure many serial ports rapidly or need to import the configuration from another computer.

### **3.1.5. Automatically start configured ports**

Check the **Automatically Start Ports** option to start all ports as soon as the UEI Serial Server is started.

Click on **Apply** to save configuration.

You can also add a shortcut to UEI Serial Server in your **Program/Startup** menu to automatically run the UEI Serial Server after booting your computer.

## **3.2. Status...**

Open status window to view each port status and incoming/outgoing traffic.







